

## Волна А.А.

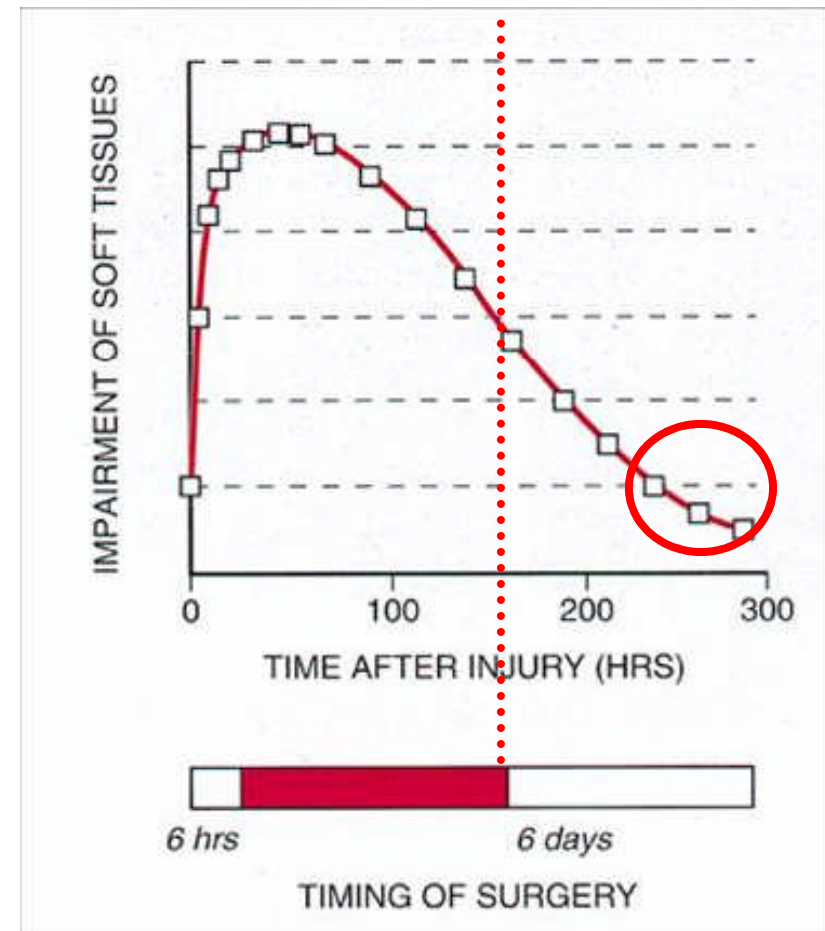
К дискуссии по поводу лечения переломов проксимальной голени



# Timing of Surgery

**Operate when skin is ready**

- Avoid 1-6 days
- Await soft tissue envelope
  - (10-21 days)



Thanks to Steven R. Schelkun

# Delayed Surgery

- The use of a temporary spanning external fixator will allow optimal recovery of soft tissues while preserving length and axis



# CT

- Axial scan
- Coronal and sagittal reformats
- **Preoperative planning**
- Most helpful after ligamentotaxis with provisional frame

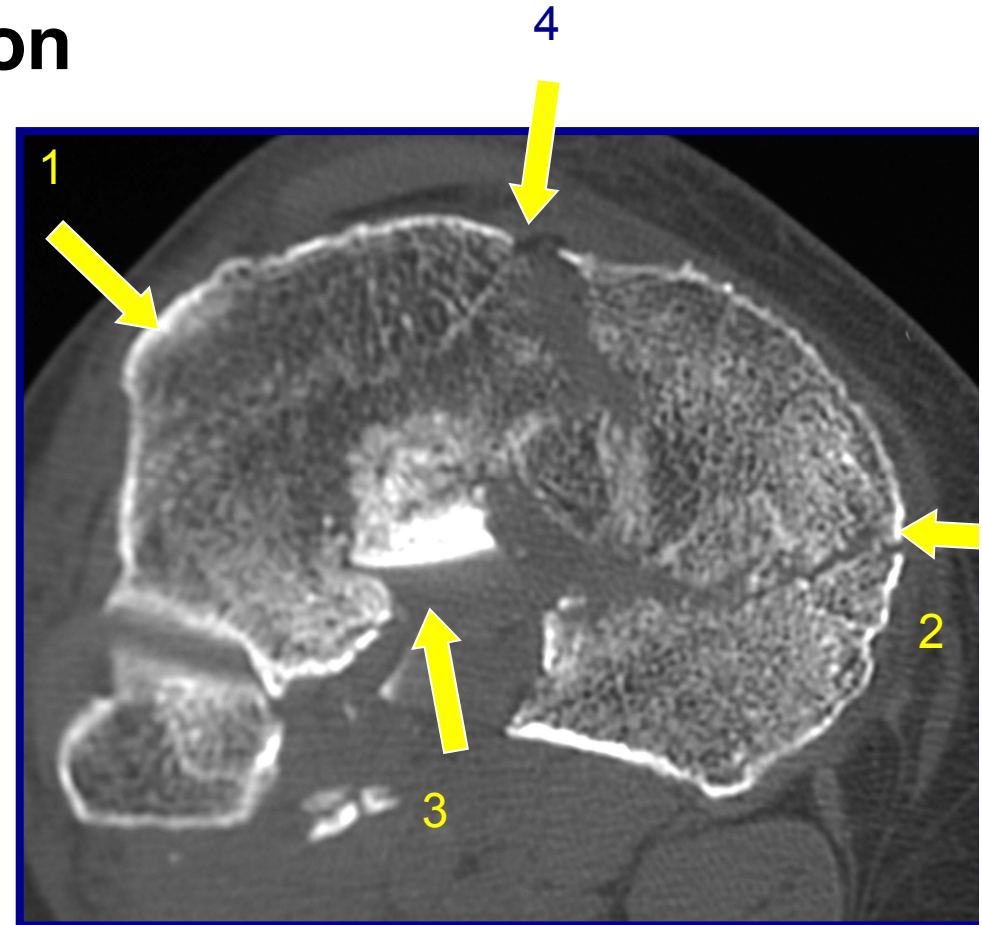


# Understanding the Injury

## Transverse CT Evaluation

- Aids reduction
- Surgical approach
- Implant location

1. Lateral side intact
2. Frontal plane split in medial side
3. Depressed fragments in center
4. Cortex access medial to tuberosity anteriorly



# Surgical approaches to the Proximal Tibia

- **Open (conventional) surgical approaches:**

- ✓ Middle (midline, long parapatellar)
- ✓ Anterolateral
- ✓ Posterolateral
- ✓ Anteromedial
- ✓ Posteromedial
- ✓ Posterior

- **Limited surgical approaches:**

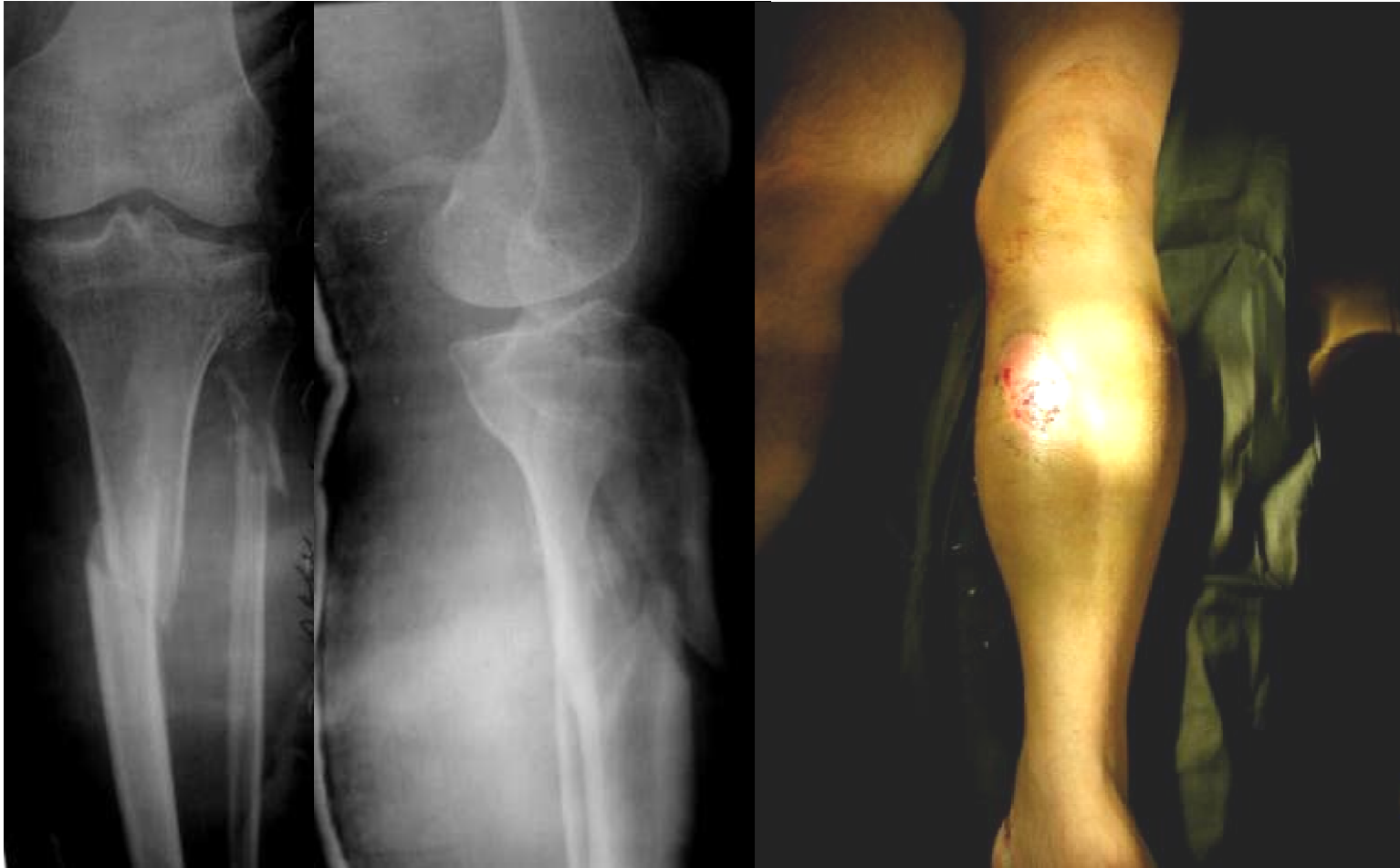
- ✓ Anterolateral
- ✓ Posteromedial

- **Percutaneous approaches:**

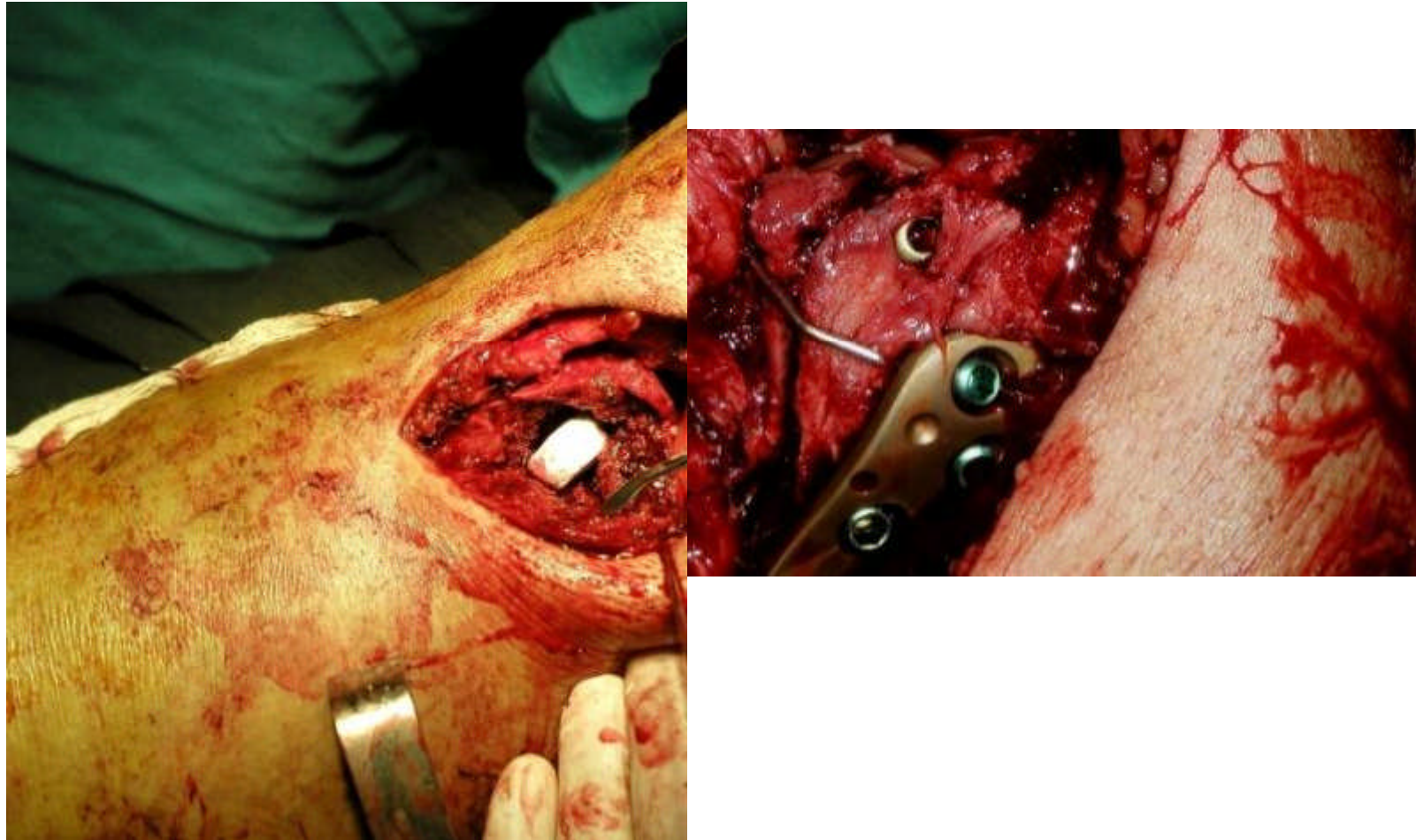
- ✓ For screw (or/and plate) insertion and reduction
- ✓ For ExFix

- **Arthroscopy approach**

**M, 57 y.o., mountain ski injury**  
**Limited anterolateral approach**



**M, 57 y.o., mountain ski injury**  
**Limited anterolateral approach**





# Support Articular Surfaces with Bone Substitute

- **Bone graft**

- Metaphyseal defects should be filled in with bone graft to prevent articular redisplacement.

- Autologous

- Substitute



**M, 57 y.o., mountain ski injury**  
**Limited anterolateral approach**



Thanks to Thomas Ruedi

Compression  
lag screw  
and / or  
Plates



G. N, 25 y old lady, skiing accident on 27 Jan. 1959 : Pilon 43-C3

Thanks to Thomas Ruedi

**Jan 27th 1959**

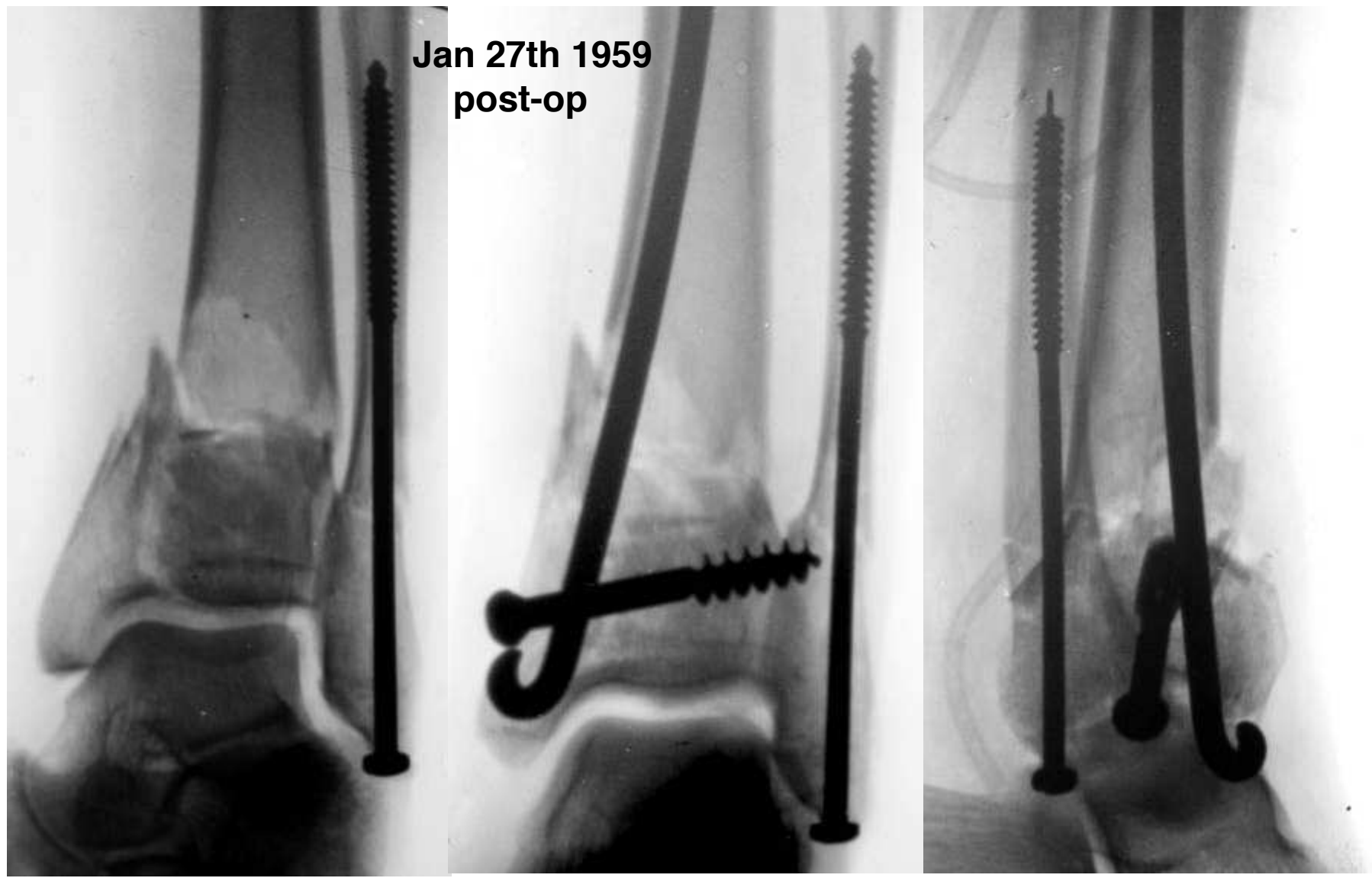


only plain x-rays  
no Tomogr, no CT

emergency surgery  
by M. Allgöwer  
limited implants &  
Instruments  
available

G.N 25y 3 different types of implants: - straight non AO malleolar screw  
- Rush pin  
- AO 6.5mm Cancellous bone screw

Thanks to Thomas Ruedi



G. N. same patient in 2007, 48 y later,

Thanks to Thomas Ruedi



No discomfort  
Good function

No signs of osteo-  
arthritis even after  
48 years !!

do we really need  
LCP Pilon plates etc.??  
or just a good surgeon ?